

WIFI Alarm System



Preface

Thanks for using our wireless smart security home alarm system. This system will provide full protection in 24 hours all around the year for your house and property.

The wireless alarm system adopts the advanced digital security technology, it is of high reliability and low false alarm rate. Though the design is simple, function is very strong. It includes the functions of anti-fire, anti-burglar, anti-gas, anti-intrusion and SOS emergency, etc. The wireless detectors which pair with the system have humanized functions of anti-interference, avoiding the false alarm, etc. This alarm system is widely used in family, factories, schools, shops, convenience stores, villas, residential areas where needs to be protected.

To ensure your safety and proper use the system, please read this user manual carefully before installation. Please contact your local distributor or authorized technology service center for consulting if you encounter problems during installation. You also can call the after-sale service phone numbers of our company, our engineer will help to solve the problems.

1. Main Feature

- Smart WIFI Alarm System
- Support 24 wireless zones
- Five zone types for choose: Normal / Stay / Smart /Emergency / Close Zone
- Can store three groups of time arm and disarm function, each group can be customized by week, avoid manual frequent arm and disarm, to realize intelligent automatic control
- Voice prompt for all the operations
- Low battery alert of the accessories
- Built-in rechargeable battery
- Built-in siren
- Wireless learning code, fast and easy to add new accessories
- Can revise zone name

2. Technical Parameter

- Input Voltage: DC5V
- Static Current: < 75mA
- Alarm Current: < 150mA
- WIFI: 2.4G
- Back-up battery: Lithium battery, DC3.7V
- Siren: 100dB
- Alarm Host RF receiving frequency: 433MHz (± 75 MHz), PT2262/1.5-4.7M Ω , EV1527/300K
- Alarm Host RF Transmitting frequency: 433MHz(± 75 MHz), PT2262/1.5-4.7M Ω , EV1527/300K
- Factory default password: 1234
- Working temperature: -10 $^{\circ}$ C~+50 $^{\circ}$ C

3. Download for App

Search for "Smart Life" app in App store/App Market, or scan the QR code below to download.



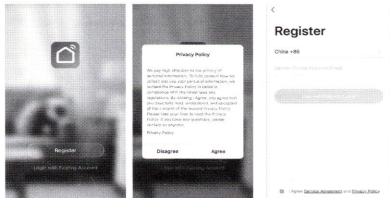
Scan QR code to download



4. Register/Login with Existing Account

4.1 Register

If you do not have an App account yet, you can register an account or log in via SMS verification code. Please read the current page and the next page for the description of registration process. Click "Register", enter Privacy Policy page on Smart life App, click to Agree and enter to the registration page for Mobile or E-mail address.



4.2 Login with existing account

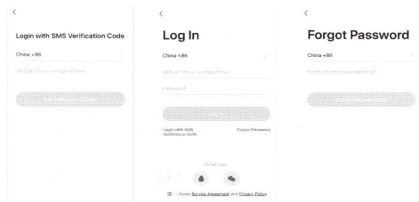
If you have already registered an account, you can skip the creating a new account, click "login with existing account", enter the login page.

(1) The system automatically select the current Country/Region, or you can manually select the Country /Region.

(2) Enter your registered mobile number or e-mail address, enter your password to login the system.

Login with social media account.

If your phone has installed WeChat App or QQ App, click WeChat/QQ icon in the login with social media account area. After accessing the authorization page, login the system.



5. Connect Wi-Fi for Alarm Panel

5.1 Attention before add device.

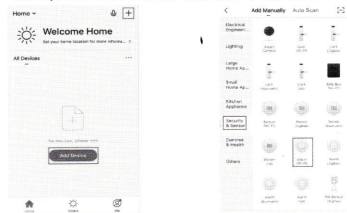
The panel only support 2.4GHz Wi-Fi network. It does not support 5GHz Wi-Fi network. Before configure Wi-Fi, please set the router parameters. The Wi-Fi password should not contain special characters of ~!@#%\$^&*(). When configuring Wi-Fi, make sure your router, mobile and device are as close as possible for a quick configuration of the device.

5.2 Connect Wi-Fi Operation

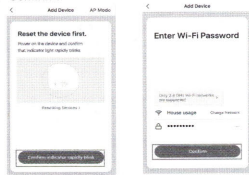
■ Please connect DC 5V power adapter and turn on the switch of the alarm

panel. (One app support many alarm devices, you can bind different smart life alarm panels at the same time.)

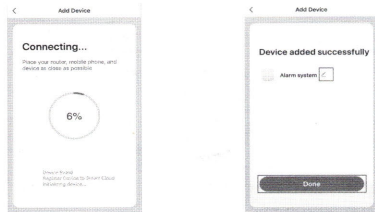
■ After registered and login app, then click "+" or add device. Then select "Security& Sensor", next select "Alarm(Wi-Fi)" and click it.



■ At the same time, please press 【RESET】 button of the panel and hold around 3 seconds, the alarm panel will beep 6 times, then release 【RESET】 key. Then press "Confirm indicator rapidly blink", next select "Network" and input Wi-Fi password and press "Confirm".

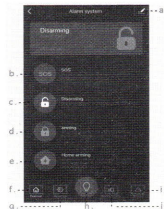


■ Wait for connecting step. Then you can choose the device name and room scene after the device added successfully.




6. The meaning of each icon on APP

- Edit Device name/Remove Device...
- Press "SOS" to activate alarm.
- Press "Disarming" to disarm alarm.
- Press "Arming" to arm system.
- Press "Home arming" to stay arm.
- Press "Control" to choose arm/sos...
- Press "Settings" to do related parameter setting
- Press "Light" to turn on/off light of panel.
- Press "Record" to check alarm record.
- Press "Accessories" to add/delete sensors/remotes



7. Edit Device name/Device location/Share Device/Remove

Device

Choose the Device that you want to edit and then click , then choose "Device name" to edit. (If want to edit others, same operation like this.)

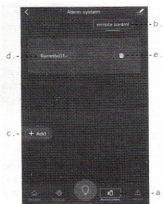


8. Adding remotes and detectors with panel via APP

8.1 Adding remotes

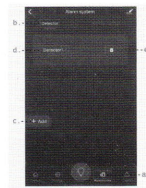
- Please select "Accessories" button
- Choose "Remote Control"
- Press "+Add" button and trigger any button of remote
- Edit name of Remote
- Delete remote

*** to add remote, press and hold any remote button before tapping +Add;**
*** you will hear several confirmation beeps**
*** if you hear 3 quick beeps then the remote was not found**



8.2 Adding detectors

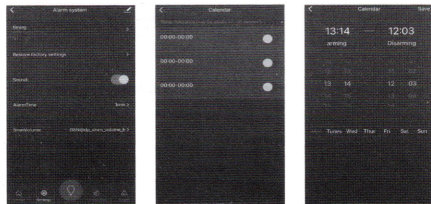
- Please select "Accessories" button
- Choose "Detector"
- Press "+Add" button and trigger detector
- Edit name of Detector
- Delete detector



9. "Settings" Introduction in APP.

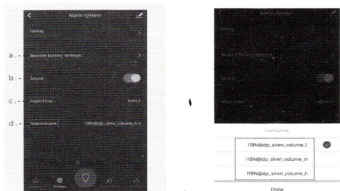
9.1 Timing arm/disarm.

Please press "Settings" icon, then choose "Timing" icon. Next you can choose the time that you want to timing arm/disarm (Please do not forget to choose "Mon/Tues...Sun), finally please press "Save" button.



9.2 Related parameter setting.

- All Operation will back to default setting.
- Press "Sound" to turn on/off the sound of panel.
- Press "Alarm Time" to set alarming time of panel.
- Press "Siren Volume" to choose the loudness of sound of panel.



10. The Installation of the Detectors

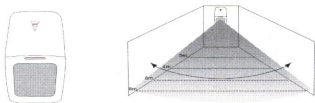
The Installation Diagram of Magnetic Door Detector:



Caution:

- A: The gap between the magnet and the sensor should be less than 10mm.
- B: After the installation, if the indicate light of the detector is on when the door is open. It proves it is installed successfully.
- C: If the indication light of the door detector flashes when it is triggered, it means the battery of the sensor is in low voltage, and you need to change the battery as soon as possible.
- D: The transmit distance of the detectors is less than 100meters in the open area, please test the distance before installing. The obstacles will change the transmitting distance.

The Installation Diagram of PIR Motion Detector:



To avoid the false alarm, please pay attention to the following point in stalling the PIR motion detector:

- A: Do not face the glass window.
- B: Do not face the big object which is easy to swing.
- C: Do not face the cold and heat air vent or cold and heat source.
- D: The furniture, mini escape or any other isolation should be away from the detecting scope.
- E: Do not install two or more detectors in the same area or it will cause the interference when alarm.
- F: When the detector is triggered and the LED indicator flashes, it means the battery is in low voltage, please change it as soon as possible.
- G: The detecting distance is less than 8 meters, the transmitting distance is less than 100 meters. Please test the distance after installing. The obstacles will influence the distance.

11. Maintenance

System Inspection:

The System need periodic inspection to ensure the stable and safe work. We suggest the users to inspect the system per three month and inspect the detectors per month.

Alarm Host Inspection:

- A: Check whether the host can arm or disarm normally.
- B: Check whether the host can receive the signal from detectors normally and back-up battery work normally or not.

Detector Inspection:

- A: Trigger the detector by hand to check whether it can send the alarm signal successfully or not.
- B: Check the battery of each detector to see whether it is short of voltage.

Cautions:

- A: Do not dissemble, repair, transform the products privately, or it will cause fault or accident.
- B: Do not fall the product on the hard ground to avoid the fault or damage because of the strong crash.
- C: Do not set "911" or any security department's telephone numbers as the alarming phone numbers without any authorization.