

TWINGO

8 Electrical equipment

81B INTERIOR LIGHTING

List and location of components	81B - 2
Operating diagram	81B - 3
Features	81B - 5
Customer complaints	81B - 6
Fault finding chart	81B - 7

V1

Edition Anglaise

"The repair procedures given by the manufacturer in this document are based on the technical specifications current when it was prepared.

The procedures may be modified as a result of changes introduced by the manufacturer in the production of the various component units and accessories from which his vehicles are constructed."

All rights reserved by Renault s.a.s.

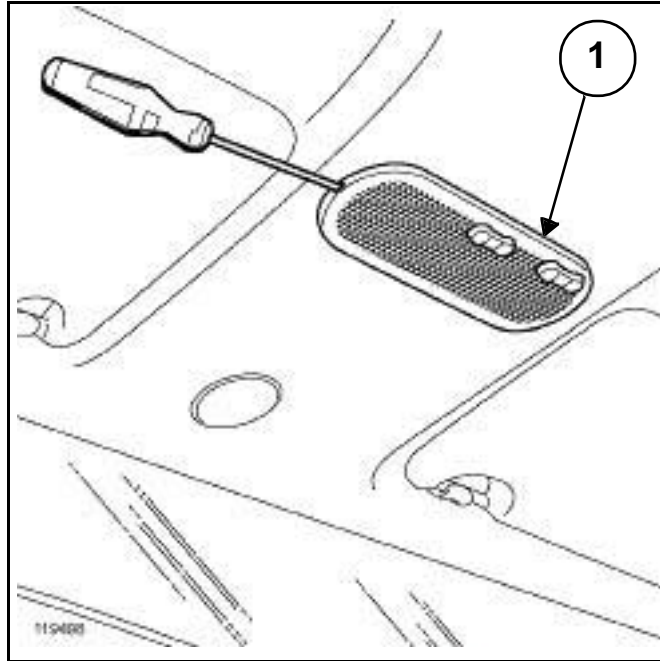
Copying or translating, in part or in full, of this document or use of the service part reference numbering system is forbidden without the prior written authority of Renault s.a.s.

© Renault s.a.s.

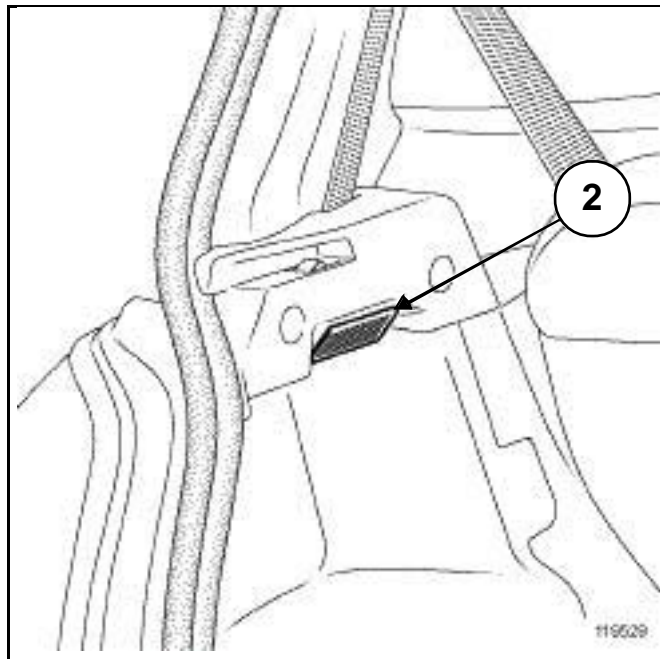
INTERIOR LIGHTING

List and location of components

81B



1 Front courtesy light



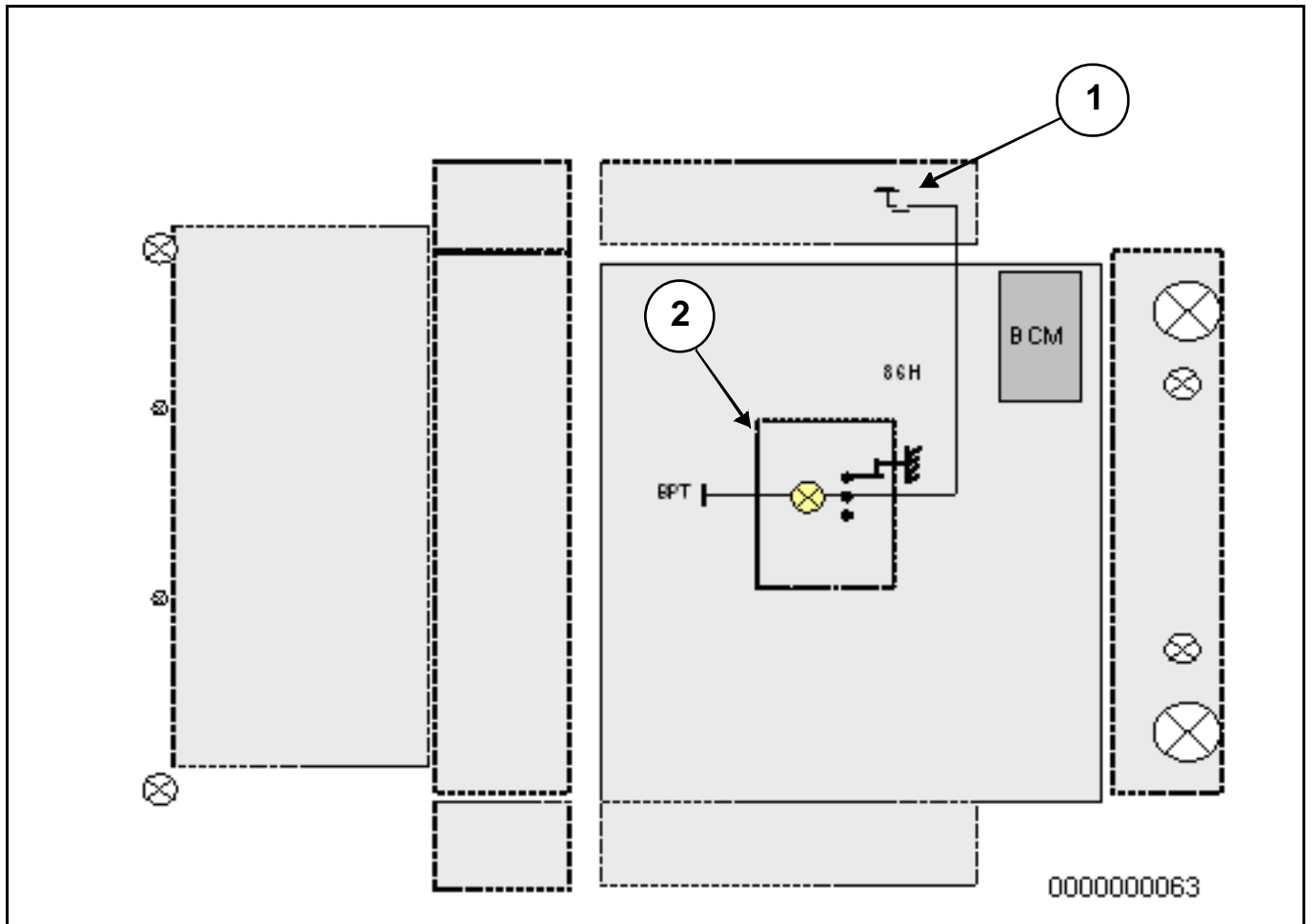
2 Luggage compartment light

INTERIOR LIGHTING

Operating diagram

81B

Entry level layout:



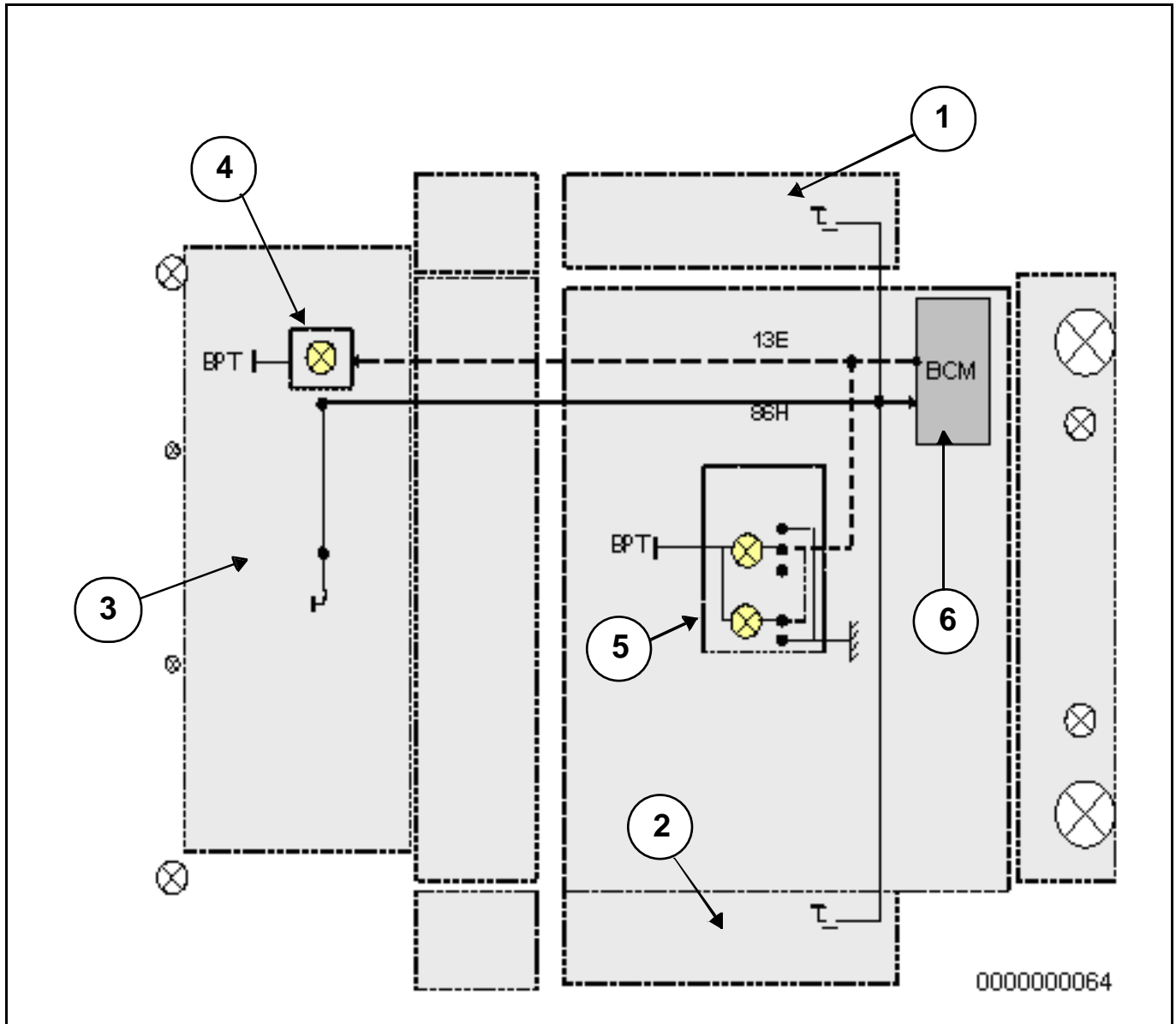
- 1 Driver's side door (door opening/closing switch).
- 2 Entry level interior lights.

INTERIOR LIGHTING

Operating diagram

81B

Layout with progressive lighting:



- 1 Driver's side door (door opening/closing switch).
- 2 Passenger's side door (door opening/closing switch).
- 3 Tailgate (door opening/closing switch).
- 4 Luggage compartment light controlled by the UCH.
- 5 Top of the range interior light controlled by the UCH and/or manually
- 6 UCH (controls the illumination or extinction of the interior lights in automatic mode)

- The front courtesy light can light up (or not) the passenger compartment.
- The luggage compartment light only lights up the luggage compartment.
- The UCH controls the operation of the front courtesy light and luggage compartment light for a timed period and controls the operation in manual mode.

The function of the system is to light the interior of the vehicle when activated by the customer:

List of actions controlling light illumination:

- Door or luggage compartment opening

List of actions controlling the illumination of lighting for a timed period T_MAINTAINED:

- Unlocking
- The engine is switched off

List of actions controlling lighting deactivation:

- Locking
- The engine is started.
- Closing a door or the luggage compartment, Driving.

List of actions controlling the extinction of the lighting after a delay T_MAINTAINED:

- Closing all doors, Vehicle stopped.

List of actions controlling the illumination and extinction of the interior lights in manual mode:

The illumination of the interior lights is controlled by a central button with 3 positions and the following modes:

- forced on: the interior light bulbs are on.
- forced off: forced extinction of the interior lights forces the bulbs to be switched off regardless of the door switch positions. Forced illumination of the light is still possible using the button.
- Automatic: this operating mode is controlled according to the customer's actions.

INTERIOR LIGHTING

Customer complaints

81B

INTERIOR LIGHTING ILLUMINATION WITHOUT ELECTRIC CENTRAL DOOR LOCKING WITH STANDARD ROOF

- THE FORCED ILLUMINATION MODE OF THE FRONT CEILING LIGHT DOES NOT WORK ALP 1
- THE INTERIOR LIGHTS DO NOT GO OUT IN FORCED DEACTIVATION MODE ALP 2
- THE INTERIOR LIGHTS DO NOT COME ON WHEN THE DOORS ARE OPENED ALP 3
- THE FRONT CEILING LIGHT DOES NOT GO OUT WHEN THE DOOR IS CLOSED ALP 4

INTERIOR ILLUMINATION WITH ELECTRIC DOOR LOCKING WITH STANDARD ROOF

- THE LIGHT DOES NOT WORK IN FORCED ILLUMINATION MODE ALP 5
- THE FORCED ILLUMINATION MODE OF THE FRONT CEILING LIGHT DOES NOT WORK ALP 6
- THE INTERIOR LIGHTS DO NOT COME ON WHEN THE DOORS ARE OPENED AND CLOSED AND WHEN THE ENGINE IS SWITCHED OFF ALP 7
- THE FRONT CEILING LIGHT DOES NOT GO OUT WHEN THE DOORS ARE CLOSED AND LOCKED AND WHEN THE VEHICLE IS STARTED ALP 8

INTERIOR ILLUMINATION WITH ELECTRIC CENTRAL DOOR LOCKING WITH SUNROOF

- THE LIGHT DOES NOT WORK IN FORCED ILLUMINATION MODE ALP 9
- THE FORCED ILLUMINATION MODE OF THE FRONT CEILING LIGHT DOES NOT WORK ALP 10
- THE INTERIOR LIGHTS DO NOT COME ON WHEN THE DOORS ARE OPENED AND CLOSED AND WHEN THE ENGINE IS SWITCHED OFF ALP 11
- THE FRONT CEILING LIGHT DOES NOT GO OUT WHEN THE DOORS ARE CLOSED AND LOCKED AND WHEN THE VEHICLE IS STARTED ALP 12

INTERIOR LIGHTING

Fault finding chart

81B

ALP 1	The front courtesy light does not work in forced illumination mode
--------------	---

NOTES	The doors must be closed and the engine switched off.
--------------	---

Does the front courtesy light work when one of the doors is opened?

YES



Fault on connection **MAM** between component **213** and the chassis earth. Repair the wiring. If there is a repair procedure (see **Technical Note 6015A, Repairing electrical wiring, Wiring: Precautions for repair**), repair the wiring, otherwise replace it.

NO



Check the condition of the interior light bulb.

Is the bulb okay?

YES



Use a test bulb to check for + 12 V between connection **BPT** and **MAM** of component **213**.

Is the test light lit?

YES



Replace the front courtesy light.

NO



Replace the front courtesy light bulb.

NO



Test the continuity of connection **BPT** between component **213** and component **645**.

Is the continuity correct?

YES



See **87B**, passenger compartment connection unit.

NO



Fault on connection **BPT** between component **213** and component **645**. Repair the wiring. If there is a repair procedure (see **Technical Note 6015A, Repairing electrical wiring, Wiring: Precautions for repair**), repair the wiring, otherwise replace it.

INTERIOR LIGHTING

Fault finding chart

81B

ALP 2	The interior lights do not go out in forced extinction mode
--------------	--

NOTES	The doors must be closed and the engine switched off
--------------	--

Check the insulation to the earth of connection **13 E** between components **213** and **645**.

Is the insulation correct?

YES



See **87B**, passenger compartment connection unit.

NO



Fault on connection **13E** between component **213** and component **645**. Repair the wiring. If there is a repair procedure (see **Technical Note 6015A, Repairing electrical wiring, Wiring: Precautions for repair**), repair the wiring, otherwise replace it.

INTERIOR LIGHTING

Fault finding chart

81B

ALP 3	The front ceiling light does not work when the doors are opened
--------------	--

NOTES	Check that status ET463 "door(s) or tailgate" is open.
--------------	---

Use a test bulb to check for + 12 V between connection **13 E** and connection **BPT** of component **213**.

Is the test light lit?

YES

NO



Check the condition of the interior light bulb.

Is the bulb correct?.

YES

NO

Replace the interior light bulb.

Check the continuity between connection **13 E** and connection **BPT** of component **213**.

Is the continuity correct?

YES

NO

End of procedure.

Replace the front courtesy light.

INTERIOR LIGHTING

Fault finding chart

81B

ALP 3 CONTINUED	
----------------------------	--



Use a test bulb to check for + 12 V between connection **BPT** of component **213** and a chassis earth.

Is the test light lit?

YES

Fault on connection **13E** between components **213** and **645**. Repair the wiring. If there is a repair procedure (see **Technical Note 6015A, Repairing electrical wiring, Wiring: Precautions for repair**), repair the wiring, otherwise replace it.

NO

Test the continuity on connection **BPT** between components **213** and **645**.

Is the continuity correct?

YES

See **87B**, passenger compartment connection unit.

NO

Fault on connection **BPT** between components **213** and **645**. Repair the wiring. If there is a repair procedure (see **Technical Note 6015A, Repairing electrical wiring, Wiring: Precautions for repair**), repair the wiring, otherwise replace it.

INTERIOR LIGHTING

Fault finding chart

81B

ALP 4	The front ceiling light does not go out when the door is closed
--------------	--

NOTES	Check that status ET463 "door(s) or tailgate" is closed.
--------------	---

Check the insulation to the earth of connection **13 E** between components **213** and **645**.

Is the insulation correct?

YES



See **87B**, passenger compartment connection unit.

NO



Fault on connection **13E** between component **213** and component **645**. Repair the wiring. If there is a repair procedure (see **Technical Note 6015A, Repairing electrical wiring, Wiring: Precautions for repair**), repair the wiring, otherwise replace it.

INTERIOR LIGHTING

Fault finding chart

81B

ALP 5	The light does not work in forced illumination mode
--------------	--

NOTES	The doors must be closed and the engine switched off.
--------------	---

Use a test bulb to check for + 12 V between connection **BPT** and connection **MAM** of component **213**.

Is the test light lit?

YES

NO



Check the condition of the light bulb.

Is the bulb okay?

YES

NO

Replace the light bulb.

Test the continuity between connection **BPT** and **MAM** of component **213**.

Is the continuity correct?

YES

NO

End of procedure.

Replace the front courtesy light.

INTERIOR LIGHTING

Fault finding chart

81B

ALP 5 CONTINUED	
----------------------------	--

A



Use a test bulb to check for + 12 V between connection **BPT** component **213** and a chassis earth.

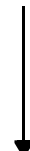
Is the test light lit?

YES



Fault on connection **MAM** of component **213**. Repair the wiring. If there is a repair procedure (see **Technical Note 6015A, Repairing electrical wiring, Wiring: Precautions for repair**), repair the wiring, otherwise replace it.

NO



Test the continuity of connection **BPT** between components **213** and **645**.

Is the continuity correct?

YES



See **87B**, passenger compartment connection unit.

NO



Fault on connection **BPT** between components **645** and **213**. Repair the wiring. If there is a repair procedure (see **Technical Note 6015A, Repairing electrical wiring, Wiring: Precautions for repair**), repair the wiring, otherwise replace it.

INTERIOR LIGHTING

Fault finding chart

81B

ALP 6	The front courtesy light does not work in forced illumination mode
--------------	---

NOTES	The doors must be closed, the engine switched off and the interior lights must be active.
--------------	---

Use a test bulb to check for + 12 V between connection **MAM** and connection **BPT** of component **213**.

Is the test light lit?

YES

NO



Check the condition of the interior light bulb.

Is the bulb okay?

YES

NO

Replace the bulb.

Test the continuity between connection **MAM** and connection **BPT** of component **213**.

Is the continuity correct?

YES

NO

End of procedure.

Replace the front courtesy light.

INTERIOR LIGHTING

Fault finding chart

81B

ALP 6 CONTINUED	
----------------------------	--

A

Use a test bulb to check for + 12 V between connection BPT of component 213 and a chassis earth.
Is the test light lit?

YES

NO

Test the continuity on connection MAM between components 213 and 645.
Is the continuity correct?

Test the continuity on connection BPT between components 645 and 213.
Is the continuity correct?

YES

NO

YES

NO

See **87B**, passenger compartment connection unit.

Fault on connection **MAM** between components **645** and **213**. Repair the wiring. If there is a repair procedure (see **Technical Note 6015A, Repairing electrical wiring, Wiring: Precautions for repair**), repair the wiring, otherwise replace it.

See **87B**, passenger compartment connection unit.

Fault on connection **BPT** between components **645** and **213**. Repair the wiring. If there is a repair procedure (see **Technical Note 6015A, Repairing electrical wiring, Wiring: Precautions for repair**), repair the wiring, otherwise replace it.

INTERIOR LIGHTING

Fault finding chart

81B

ALP 7	The interior lights do not come on when the doors are opened, when the doors are unlocked and when the engine is switched off
--------------	--

NOTES	Check that status ET463 "door(s) or tailgate" is open.
--------------	---

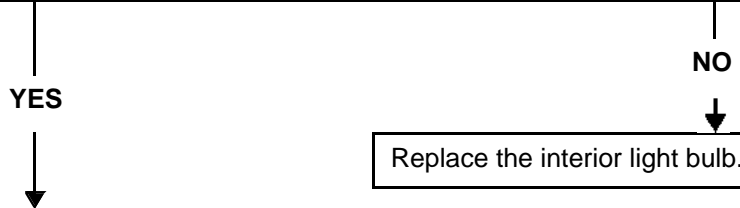
Use a test bulb to check for + 12 V between connection **13 E** and connection **BPT** of component **213**.

Is the test light lit?



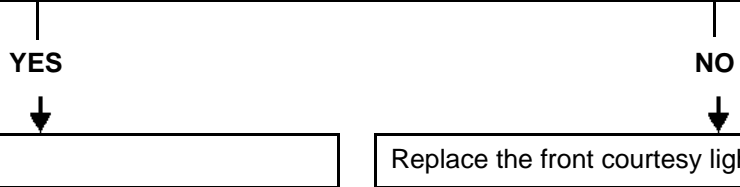
Check the condition of the interior light bulb.

Is the bulb correct?



Check the continuity between connection **13 E** and connection **BPT** of component **213**.

Is the continuity correct?



INTERIOR LIGHTING

Fault finding chart

81B

ALP 7 CONTINUED	
----------------------------	--

A

Use a test bulb to check for + 12 V between connection **BPT** of component **213** and a chassis earth

Is the test light lit?

YES

Fault on connection **13E** between components **213** and **645**. Repair the wiring. If there is a repair procedure (see **Technical Note 6015A, Repairing electrical wiring, Wiring: Precautions for repair**), repair the wiring, otherwise replace it.

NO

Check the continuity on connection **BPT** between components **213** and **645**.

Is the continuity correct?

YES

See **87B**, passenger compartment connection unit.

NO

Fault on connection **BPT** between components **213** and **645**. Repair the wiring. If there is a repair procedure (see **Technical Note 6015A, Repairing electrical wiring, Wiring: Precautions for repair**), repair the wiring, otherwise replace it.

INTERIOR LIGHTING

Fault finding chart

81B

ALP 8	The front courtesy light does not go out when the doors are closed
--------------	---

NOTES	Check that status ET463 "door(s) or tailgate" is open.
--------------	---

Check the insulation to the earth of connection **13 E** between components **213** and **645**.

Is the insulation correct?

YES



See **87B**, passenger compartment connection unit.

NO



Fault on connection **13E** between components **213** and **645**. Repair the wiring. If there is a repair procedure (see **Technical Note 6015A, Repairing electrical wiring, Wiring: Precautions for repair**), repair the wiring, otherwise replace it.

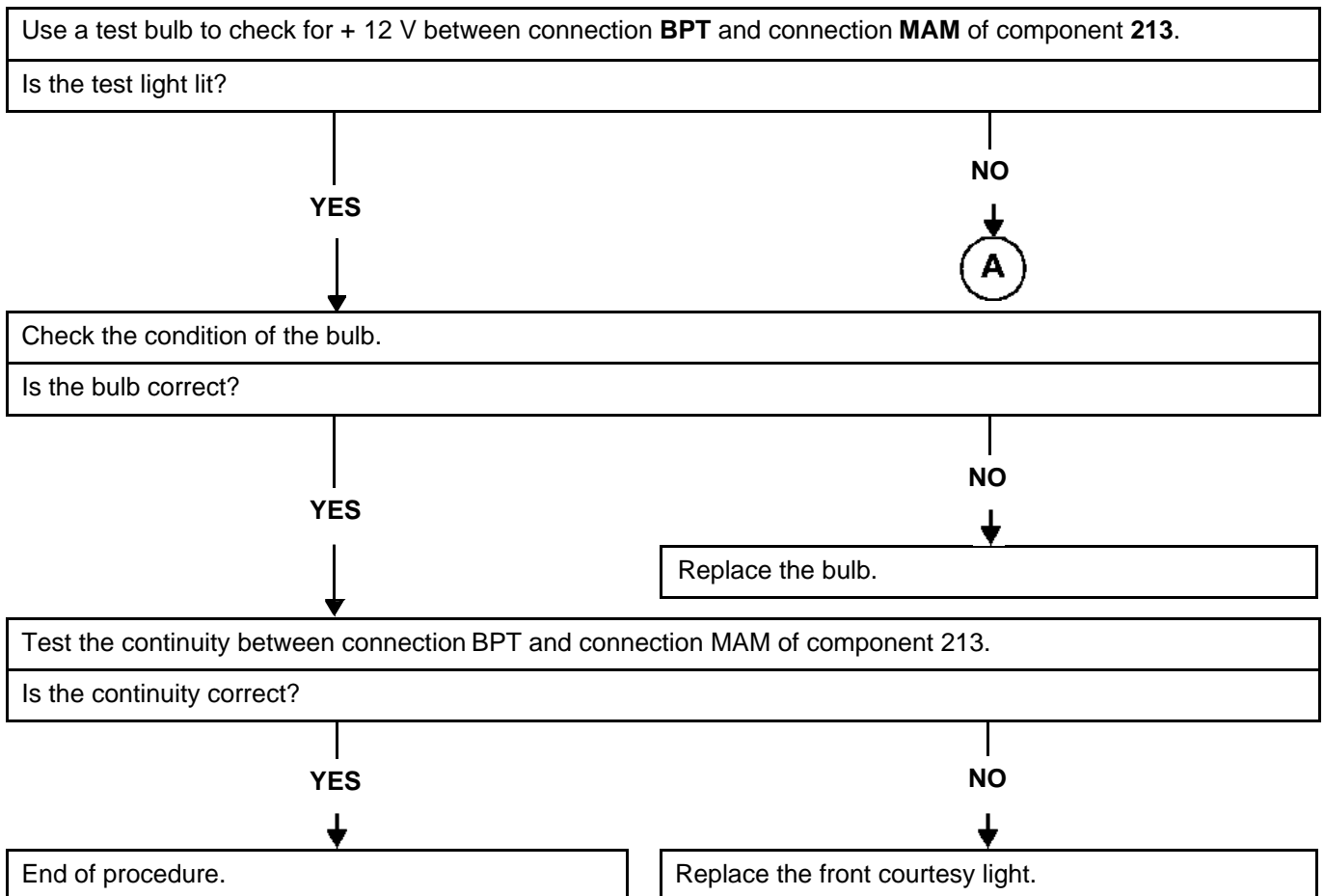
INTERIOR LIGHTING

Fault finding chart

81B

ALP 9	The light does not work in forced illumination mode
--------------	--

NOTES	The test must be carried out with the doors closed and the engine off.
--------------	---



INTERIOR LIGHTING

Fault finding chart

81B

ALP 9 CONTINUED	
----------------------------	--

A

Use a test bulb to check for + 12 V between connection **BPT** of component **213** and a chassis earth.

Is the test light lit?

YES

Fault on connection **MAM**. Repair the wiring. If there is a repair procedure (see **Technical Note 6015A, Repairing electrical wiring, Wiring: Precautions for repair**), repair the wiring, otherwise replace it.

NO

Test the continuity on connection **BPT** between components **213** and **645**.

Is the continuity correct?

YES

See **87B**, passenger compartment connection unit.

NO

Fault on connection **BPT** between components **213** and **645**. **Repair** the wiring. If there is a repair procedure (see **Technical Note 6015A, Repairing electrical wiring, Wiring: Precautions for repair**), repair the wiring, otherwise replace it.

INTERIOR LIGHTING

Fault finding chart

81B

ALP 10	The front courtesy light does not work in forced illumination mode
---------------	---

NOTES	The test must be carried out with the doors closed and the engine off.
--------------	---

Use a test bulb to check for + 12 V between connection **BPT** and connection **MAM** of component **213**.

Is the test light lit?

YES

NO



Check the condition of the light bulb.

Is the bulb okay?

YES

NO

Replace the light bulb.

Test the continuity between connection **BPT** and **MAM** of component **213**.

Is the continuity correct?

YES

NO

End of procedure.

Replace the front ceiling light.

INTERIOR LIGHTING

Fault finding chart

81B

ALP 10 CONTINUED	
-----------------------------	--

A
↓

Use a test bulb to check for + 12 V between connection **BPT** component **213** and a chassis earth.

Is the test light lit?

YES
↓

Fault on connection **MAM** of component **213**. Repair the wiring. If there is a repair procedure (see **Technical Note 6015A, Repairing electrical wiring, Wiring: Precautions for repair**), repair the wiring, otherwise replace it.

NO
↓

Test the continuity of connection **BPT** between components **213** and **645**.

Is the continuity correct?

YES
↓

See **87B**, passenger compartment connection unit.

NO
↓

Fault on connection **BPT** between components **645** and **213**. Repair the wiring. If there is a repair procedure (see **Technical Note 6015A, Repairing electrical wiring, Wiring: Precautions for repair**), repair the wiring, otherwise replace it.

INTERIOR LIGHTING

Fault finding chart

81B

ALP 11	<p>The front courtesy light does not come on when the doors are opened, when the doors are unlocked and when the engine is switched off</p>
---------------	--

NOTES	<p>Check that status ET463 "door(s) or tailgate" is open.</p>
--------------	--

Use a test bulb to check for + 12 V between connection **13 E** and connection **BPT** of component **213**.

Is the test light lit?

YES

NO



Check the condition of the interior light bulb.

Is the bulb correct?.

YES

NO

Replace the interior light bulb.

Check the continuity between connection **13 E** and connection **BPT** of component **213**.

Is the continuity correct?

YES

NO

End of procedure.

Replace the front courtesy light.

INTERIOR LIGHTING

Fault finding chart

81B

ALP 11 CONTINUED	
-----------------------------	--

A

Use a test bulb to check for + 12 V between connection **BPT** of component **213** and a chassis earth.

Is the test light lit?

YES

Fault on connection **13E** between components **213** and **645**. Repair the wiring. If there is a repair procedure (see **Technical Note 6015A, Repairing electrical wiring, Wiring: Precautions for repair**), repair the wiring, otherwise replace it.

NO

Check the continuity on connection **BPT** between components **213** and **645**.

Is the continuity correct?

YES

See **87B**, passenger compartment connection unit.

NO

Fault on connection **BPT** between components **213** and **645**. Repair the wiring. If there is a repair procedure (see **Technical Note 6015A, Repairing electrical wiring, Wiring: Precautions for repair**), repair the wiring, otherwise replace it.

INTERIOR LIGHTING

Fault finding chart

81B

ALP 12	The front ceiling light does not go out when the doors are closed, when the doors are locked and when the vehicle is started
---------------	---

NOTES	Check that status ET463 "door(s) or tailgate" is open.
--------------	---

Use a test bulb to check for + 12 V between connection **13 E** and connection **BPT** of component **213**.

Is the test light lit?

YES

NO



Check the condition of the interior light bulb.

Is the bulb correct?

YES

NO

Replace the interior light bulb.

Check the continuity between connection **13 E** and connection **BPT** of component **213**.

Is the continuity correct?

YES

NO

End of procedure.

Replace the front courtesy light.

INTERIOR LIGHTING

Fault finding chart

81B

**ALP 12
CONTINUED**

A

Use a test bulb to check for + 12 V between connection **BPT** of component **213** and an earth on the chassis.

Is the test light lit?

YES

Fault on connection **13E** between components **213** and **645**. Repair the wiring. If there is a repair procedure (see **Technical Note 6015A, Repairing electrical wiring, Wiring: Precautions for repair**), repair the wiring, otherwise replace it.

NO

Check the continuity on connection **BPT** between components **213** and **645**.

Is the continuity correct?

YES

See **87B**, passenger compartment connection unit.

NO

Fault on connection **BPT** between components **213** and **645**. Repair the wiring. If there is a repair procedure (see **Technical Note 6015A, Repairing electrical wiring, wiring: Precautions for repair**), repair the wiring, otherwise replace it..