

TWINGO

8 Electrical equipment

81C FUSE BOX

Customer complaints
Fault finding chart

81C - 2
81C - 5

V1

Edition Anglaise

"The repair procedures given by the manufacturer in this document are based on the technical specifications current when it was prepared.

The procedures may be modified as a result of changes introduced by the manufacturer in the production of the various component units and accessories from which his vehicles are constructed."

All rights reserved by Renault s.a.s.

Copying or translating, in part or in full, of this document or use of the service part reference numbering system is forbidden without the prior written authority of Renault s.a.s.

© Renault s.a.s.

FUSE BOX

Customer complaints

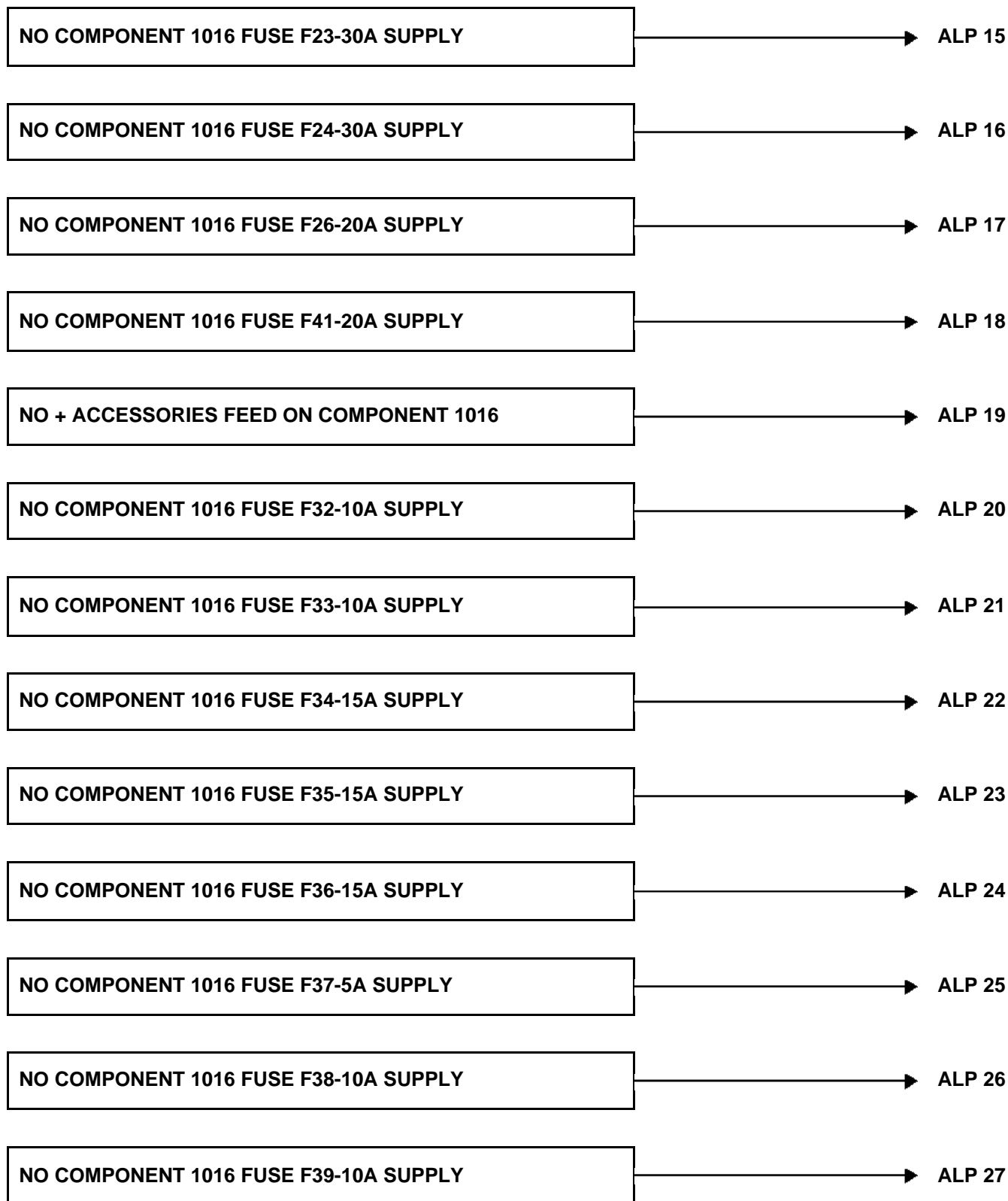
81C



FUSE BOX

Customer complaints

81C



FUSE BOX
Customer complaints

81C

NO COMPONENT 1016 FUSE F42-10A SUPPLY

ALP 28

NO COMPONENT 1016 FUSE F43-10A SUPPLY

ALP 29

NO COMPONENT 1016 DIODE D46 SUPPLY

ALP 30

FUSE BOX

Fault finding chart

81C

ALP 1	No + after ignition feed on component 1016
--------------	---

NOTES	<p>Check fuses F1-30A, F2-15A, F3-15A, F3-15A, F4-7.5A, F5-15A, F6-15A, F7-15A, F8-15A, F9-15A, F10-5A of component 1016 in addition to fuse MF-60A of component 597.</p> <p>During the test the vehicle should be on + after ignition feed.</p>
--------------	--

Use a test light to check for + 12 V between fuse **F1-30A** of component 1016 and a chassis earth.

Is the test light lit?

NO

YES

Test the continuity on connection **A** between fuse **F1-30A** of component **1016** and component **104**.

Is the continuity correct?

Check fuse F1-30A.

Is the fuse correct?

YES

NO

YES

NO

Carry out a continuity test between connection **BP12** and connection **A** of component **104**.

Fault on connection **A**. Repair the wiring. If there is a repair procedure (see **Technical Note 6015A, Repairing electrical wiring, Wiring: Precautions for repair**), repair the wiring, otherwise replace it.

Replace the passenger compartment fuse box.

Replace fuse F1-30A of component 1016.

Is the continuity correct?

YES

NO

Use a test light to check for + 12 V between connection **BP12** of component **104** and a chassis earth.

Replace the immobiliser.

Is the test light lit?

YES

NO

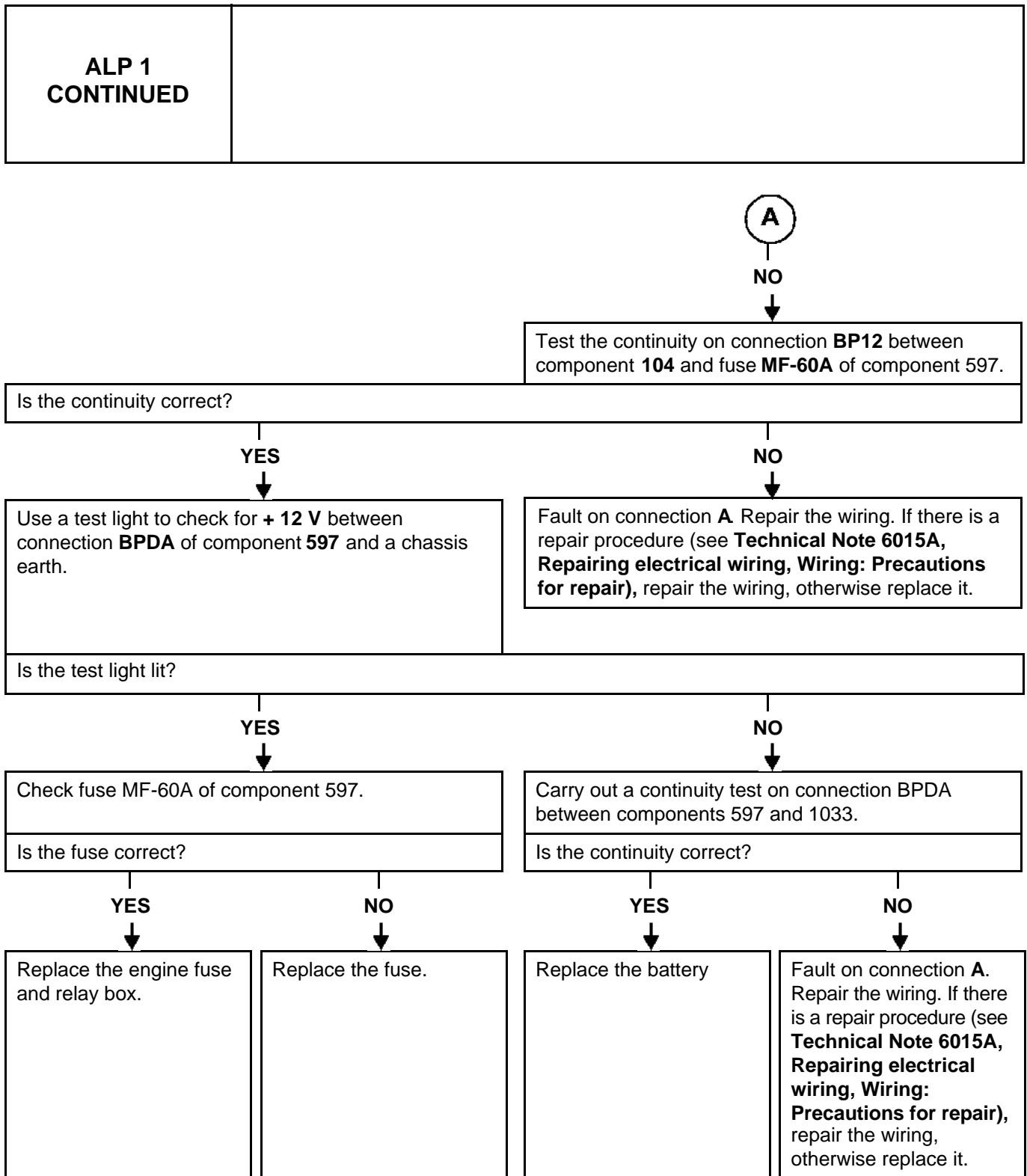
Replace the immobiliser

Ⓐ

FUSE BOX

Fault finding chart

81C



FUSE BOX

Fault finding chart

81C

ALP 2	No component 1016 fuse F11-20A supply
--------------	--

NOTES	Check fuse F11-20A of component 1016 in addition to fuse MF-60A of component 597 .
--------------	--

Use a test light to check for + 12 V between fuse **F11-20A** of component **1016** and a chassis earth.

Is the test light lit?

YES

NO

Check fuse **F11-20A** of component **1016**.

Is the fuse correct?

Carry out a continuity test on connection **BPS1** between fuse **F11-20A** of component **1016** and fuse **MF-60A** of component **1033**.

Is the continuity correct?

YES

NO

NO

YES

Replace the passenger compartment fuse box.

Replace the fuse.

Fault on connection **BPS1**. Repair the wiring. If there is a repair procedure (see **Technical Note 6015A, Repairing electrical wiring, Wiring: Precautions for repair**), repair the wiring, otherwise replace it.

Use a test light to check for + 12 V between connection **BPS1** of component **1033** and a chassis earth.

Is the test light lit?

YES

NO

End of procedure.

Replace the battery

FUSE BOX

Fault finding chart

81C

ALP 3	No component 1016 fuse F12-5A supply
--------------	---

NOTES	Check fuse F12-5A of component 1016 in addition to fuse MF-60A of component 597 .
--------------	---

Use a test light to check for + 12 V between fuse **F12-5A** of component **1016** and a chassis earth.

Is the test light lit?

YES

NO

Check fuse **F12-5A** of component **1016**.

Is the fuse correct?

Carry out a continuity test on connection **BPS1** between fuse **F12-5A** of component **1016** and fuse **MF-60A** of component **1033**.

Is the continuity correct?

YES

NO

NO

YES

Replace the passenger compartment fuse box.

Replace the fuse.

Fault on connection **BPS1**. Repair the wiring. If there is a repair procedure (see **Technical Note 6015A, Repairing electrical wiring, Wiring: Precautions for repair**), repair the wiring, otherwise replace it.

Use a test light to check for + 12 V between connection **BPS1** of component **1033** and a chassis earth.

Is the test light lit?

YES

NO

End of procedure.

Replace the battery.

FUSE BOX

Fault finding chart

81C

ALP 4	No component 1016 fuse F13-30A supply
--------------	--

NOTES	Check fuse F13-30A of component 1016 in addition to fuse MF-60A of component 597 .
--------------	--

Use a test light to check for + 12 V between fuse **F13-30A** of component **1016** and a chassis earth.

Is the test light lit?

YES



NO



Check fuse **F13-30A** of component **1016**.

Is the fuse correct?

YES



NO



Carry out a continuity test on connection **BPS1** between fuse **F13-30A** of component **1016** and fuse **MF-60A** of component **1033**.

Is the continuity correct?

NO



YES



Replace the passenger compartment fuse box.

Replace the fuse.

Fault on connection **BPS1**. Repair the wiring. If there is a repair procedure (see **Technical Note 6015A, Repairing electrical wiring, Wiring: Precautions for repair**), repair the wiring, otherwise replace it.

Use a test light to check for + 12 V between connection **BPS1** of component **1033** and a chassis earth.

Is the test light lit?

YES



NO



End of procedure.

Replace the battery.

FUSE BOX

Fault finding chart

81C

ALP 5	No component 1016 fuse F14-20A supply
--------------	--

NOTES	Check fuse F14-20A of component 1016 in addition to fuse MF-60A of component 597 .
--------------	--

Use a test light to check for **+ 12 V** between fuse **F14-20A** of component **1016** and a chassis earth.

Is the test light lit?

YES

NO

Check fuse **F14-20A** of component **1016**.

Is the fuse correct?

Carry out a continuity test on connection **BPS1** between fuse **F14-20A** of component **1016** and fuse **MF-60A** of component **1033**.

Is the continuity correct?

YES

NO

NO

YES

Replace the passenger compartment fuse box.

Replace the fuse.

Fault on connection **BPS1**. Repair the wiring. If there is a repair procedure (see **Technical Note 6015A, Repairing electrical wiring, Wiring: Precautions for repair**), repair the wiring, otherwise replace it.

Use a test light to check for **+ 12 V** between connection **BPS1** of component **1033** and a chassis earth.

Is the test light lit?

YES

NO

End of procedure.

Replace the battery.

FUSE BOX

Fault finding chart

81C

ALP 6	No component 1016 fuse F16-20A supply
--------------	--

NOTES	Check fuse F16-20A of component 1016 in addition to fuse MF-60A of component 597 .
--------------	--

Use a test light to check for + 12 V between fuse **F16-20A** of component **1016** and a chassis earth.

Is the test light lit?

YES

NO

Check fuse **F16-20A** of component **1016**.

Is the fuse correct?

Carry out a continuity test on connection **BPS1** between fuse **F16-20A** of component **1016** and fuse **MF-60A** of component **1033**.

Is the continuity correct?

YES

NO

NO

YES

Replace the passenger compartment fuse box.

Replace the fuse.

Fault on connection **BPS1**. Repair the wiring. If there is a repair procedure (see **Technical Note 6015A, Repairing electrical wiring, Wiring: Precautions for repair**), repair the wiring, otherwise replace it.

Use a test light to check for + 12 V between connection **BPS1** of component **1033** and a chassis earth.

Is the test light lit?

YES

NO

End of procedure.

Replace the battery.

FUSE BOX

Fault finding chart

81C

ALP 7	No component 1016 fuse F25-5A supply
--------------	---

NOTES	Check fuse F25-5A of component 1016 in addition to fuse MF-60A of component 597 .
--------------	---

Use a test light to check for + 12 V between fuse **F25-5A** of component **1016** and a chassis earth.

Is the test light lit?

YES



NO



Check fuse **F25-5A** of component **1016**.

Is the fuse correct?

YES



Replace the passenger compartment fuse box.

NO



Replace the fuse.

NO



Fault on connection **BPS1**. Repair the wiring. If there is a repair procedure (see **Technical Note 6015A, Repairing electrical wiring, Wiring: Precautions for repair**), repair the wiring, otherwise replace it.

YES



Use a test light to check for + 12 V between connection **BPS1** of component **1033** and a chassis earth.

Is the test light lit?

YES



End of procedure.

NO



Replace the battery.

FUSE BOX

Fault finding chart

81C

ALP 8	No component 1016 fuse F40-5A supply
--------------	---

NOTES	Check fuse F40-5A of component 1016 in addition to fuse MF-60A of component 597 .
--------------	---

Use a test light to check for **+ 12 V** between fuse **F40-5A** of component **1016** and a chassis earth.

Is the test light lit?

YES

NO

Check fuse **F40-5A** of component **1016**.

Is the fuse correct?

Carry out a continuity test on connection **BPS1** between fuse **F40-5A** of component **1016** and fuse **MF-60A** of component **1033**.

Is the continuity correct?

YES

NO

NO

YES

Replace the passenger compartment fuse box.

Replace the fuse.

Fault on connection **BPS1**. Repair the wiring. If there is a repair procedure (see **Technical Note 6015A, Repairing electrical wiring, Wiring: Precautions for repair**), repair the wiring, otherwise replace it.

Use a test light to check for **+ 12 V** between connection **BPS1** of component **1033** and a chassis earth.

Is the test light lit?

YES

NO

End of procedure.

Replace the battery.

FUSE BOX

Fault finding chart

81C

ALP 9	No component 1016 fuse F15-5A supply
--------------	---

NOTES	Check fuse F15-5A of component 1016 in addition to fuse MF-60A of component 597 .
--------------	---

Use a test light to check for **+ 12 V** between fuse **F25-5A** of component **1016** and a chassis earth.

Is the test light lit?

YES
↓

NO
↓

Check fuse **F15-5A** of component **1016**.

Is the fuse correct?

Carry out a continuity test on connection **BP11** between fuse **F15-5A** of component **1016** and fuse **MF-60A** of component **597**.

Is the continuity correct?

YES
↓

NO
↓

NO
↓

YES
↓

Replace the passenger compartment fuse box.

Replace the fuse.

Fault on connection **BP11**. Repair the wiring. If there is a repair procedure (see **Technical Note 6015A, Repairing electrical wiring, Wiring: Precautions for repair**), repair the wiring, otherwise replace it.

Use a test light to check for **+ 12 V** between connection **BPDA** of component **597** and a chassis earth.

Is the test light lit?

YES
↓

NO
↓

Use a test light to check for **+ 12 V** between connection **BP11** of component **597** and a chassis earth.

Is the test light lit?

Carry out a continuity test on connection **BPDA** between components **597** and **1033**.

Is the continuity correct?

YES
↓

NO
↓

YES
↓

NO
↓

End of procedure.

Check fuse **MF-60A**.

Replace the battery.

Fault on connection **BPDA**. Repair the wiring. If there is a repair procedure (see **Technical Note 6015A, Repairing electrical wiring, Wiring: Precautions for repair**), repair the wiring, otherwise replace it.

FUSE BOX

Fault finding chart

81C

ALP 10	No component 1016 fuse F17-30A supply
---------------	--

NOTES	Check fuse F17-30A of component 1016 in addition to fuse MF-60A of component 597 .
--------------	--

Use a test light to check for + 12 V between fuse F17-30A of component 1016 and a chassis earth.
Is the test light lit?

YES
↓

NO
↓

Check fuse F17-30A of component 1016 .
Is the fuse correct?

Carry out a continuity test on connection BP11 between fuse F17-30A of component 1016 and fuse MF-60A of component 597 .
Is the continuity correct?

YES
↓

NO
↓

NO
↓

YES
↓

Replace the passenger compartment fuse box.

Replace the fuse.

Fault on connection BP11 . Repair the wiring. If there is a repair procedure (see Technical Note 6015A, Repairing electrical wiring, Wiring: Precautions for repair), repair the wiring, otherwise replace it.

Use a test light to check for + 12 V between connection BPDA of component 597 and a chassis earth.

Is the test light lit?

YES
↓

NO
↓

Use a test light to check for + 12 V between connection BP11 of component 597 and a chassis earth.
Is the test light lit?

Carry out a continuity test on connection BPDA between components 597 and 1033 .
Is the continuity correct?

YES
↓

NO
↓

YES
↓

NO
↓

End of procedure.

Check fuse MF-60A .

Replace the battery.

Fault on connection BPDA . Repair the wiring. If there is a repair procedure (see Technical Note 6015A, Repairing electrical wiring, Wiring: Precautions for repair), repair the wiring, otherwise replace it.

FUSE BOX

Fault finding chart

81C

ALP 11	No component 1016 fuse F18-10A supply
---------------	--

NOTES	Check fuse F18-10A of component 1016 in addition to fuse MF-60A of component 597 .
--------------	--

Use a test light to check for **+ 12 V** between fuse **F18-10A** of component **1016** and a chassis earth.

Is the test light lit?

YES
↓

NO
↓

Check fuse **F18-10A** of component **1016**.

Is the fuse correct?

Carry out a continuity test on connection **BP11** between fuse **F18-10A** of component **1016** and fuse **MF-60A** of component **597**.

Is the continuity correct?

YES
↓

NO
↓

NO
↓

YES
↓

Replace the passenger compartment fuse box.

Replace the fuse.

Fault on connection **BP11**. Repair the wiring. If there is a repair procedure (see **Technical Note 6015A, Repairing electrical wiring, Wiring: Precautions for repair**), repair the wiring, otherwise replace it.

Use a test light to check for **+ 12 V** between connection **BPDA** of component **597** and a chassis earth.

Is the test light lit?

YES
↓

NO
↓

Use a test light to check for **+ 12 V** between connection **BP11** of component **597** and a chassis earth.

Is the test light lit?

Carry out a continuity test on connection **BPDA** between components **597** and **1033**.

Is the continuity correct?

YES
↓

NO
↓

YES
↓

NO
↓

End of procedure.

Check fuse **MF-60A**.

Replace the battery.

Fault on connection **BPDA**. Repair the wiring. If there is a repair procedure (see **Technical Note 6015A, Repairing electrical wiring, Wiring: Precautions for repair**), repair the wiring, otherwise replace it.

FUSE BOX

Fault finding chart

81C

ALP 12	No component 1016 fuse F20-15A supply
---------------	--

NOTES	Check fuse F20-15A of component 1016 in addition to fuse MF-60A of component 597 .
--------------	--

Use a test light to check for + 12 V between fuse **F20-15A** of component **1016** and a chassis earth.

Is the test light lit?

YES

NO

Check fuse **F20-15A** of component **1016**.

Is the fuse correct?

Carry out a continuity test on connection **BP11** between fuse **F20-15A** of component **1016** and fuse **MF-60A** of component **597**.

Is the continuity correct?

YES

NO

NO

YES

Replace the passenger compartment fuse box.

Replace the fuse.

Fault on connection **BP11**. Repair the wiring. If there is a repair procedure (see **Technical Note 6015A, Repairing electrical wiring, Wiring: Precautions for repair**), repair the wiring, otherwise replace it.

Use a test light to check for + 12 V between connection **BPDA** of component **597** and a chassis earth.

Is the test light lit?

YES

NO

Use a test light to check for + 12 V between connection **BP11** of component **597** and a chassis earth.

Is the test light lit?

Carry out a continuity test on connection **BPDA** between components **597** and **1033**.

Is the continuity correct?

YES

NO

YES

NO

End of procedure.

Check fuse **MF-60A**.

Replace the battery

Fault on connection **BPDA**. Repair the wiring. If there is a repair procedure (see **Technical Note 6015A, Repairing electrical wiring, Wiring: Precautions for repair**), repair the wiring, otherwise replace it.

FUSE BOX

Fault finding chart

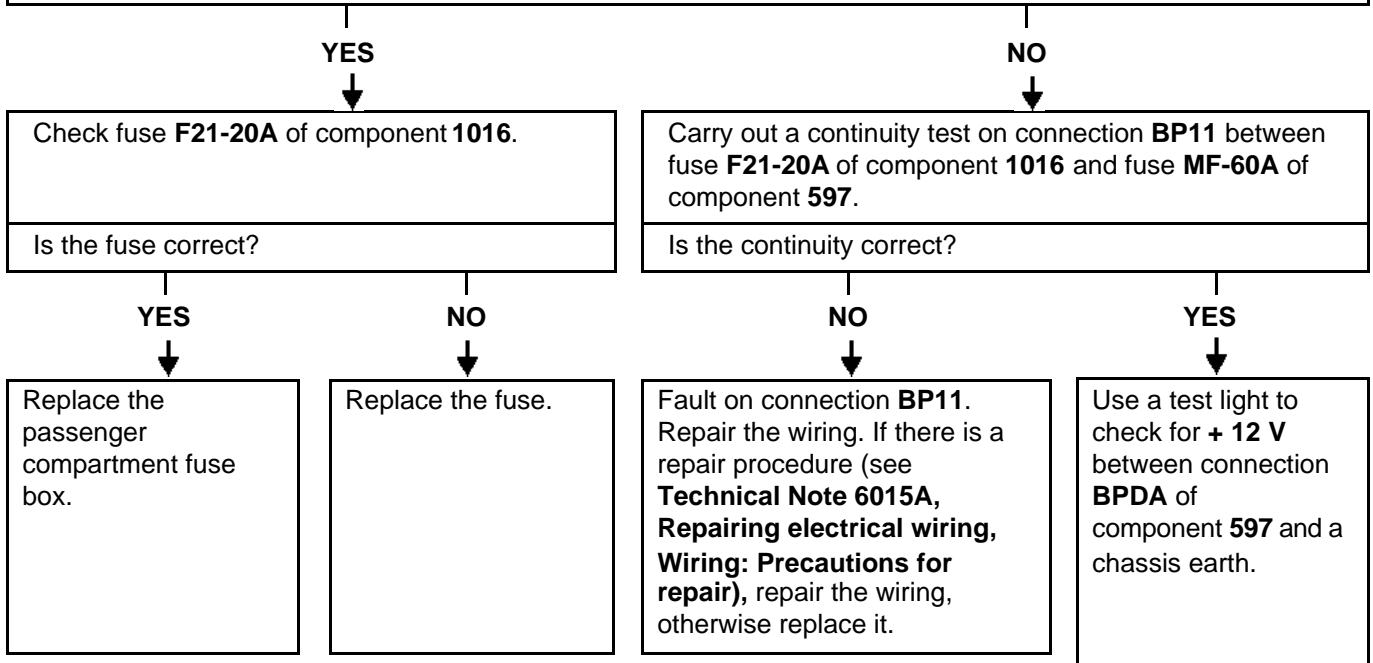
81C

ALP 13	No component 1016 fuse F21-20A supply
---------------	--

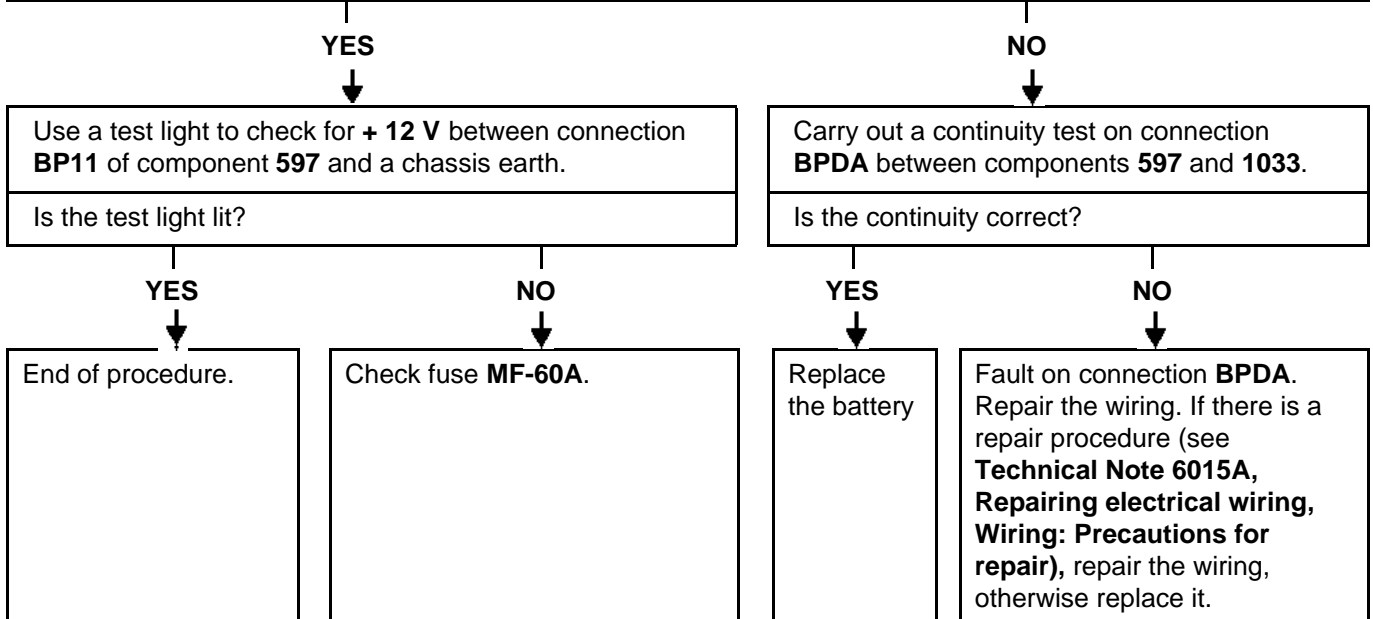
NOTES	Check fuse F21-20A of component 1016 in addition to fuse MF-60A of component 597 .
--------------	--

Use a test light to check for **+ 12 V** between fuse **F21-20A** of component **1016** and a chassis earth.

Is the test light lit?



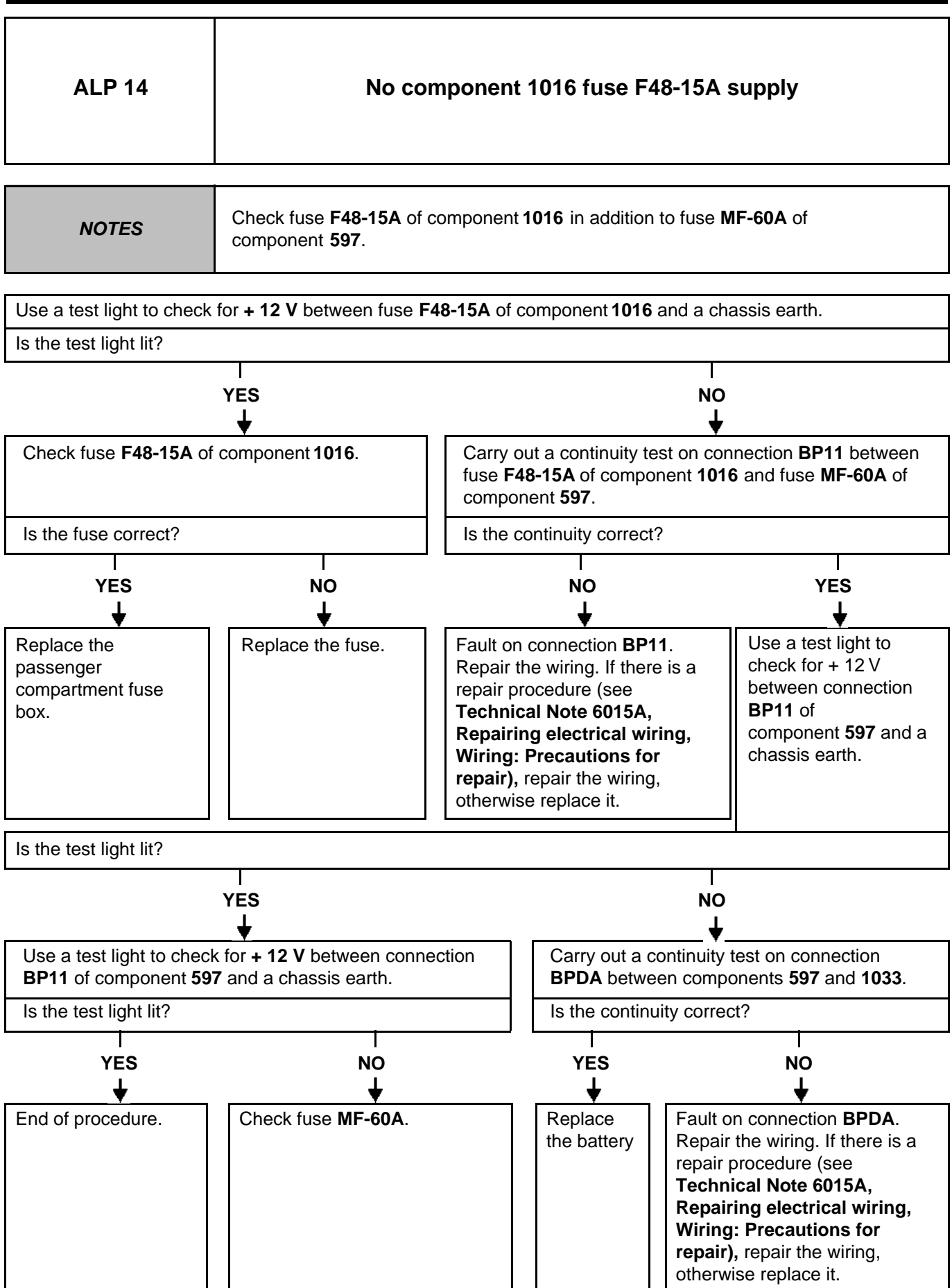
Is the test light lit?



FUSE BOX

Fault finding chart

81C



FUSE BOX

Fault finding chart

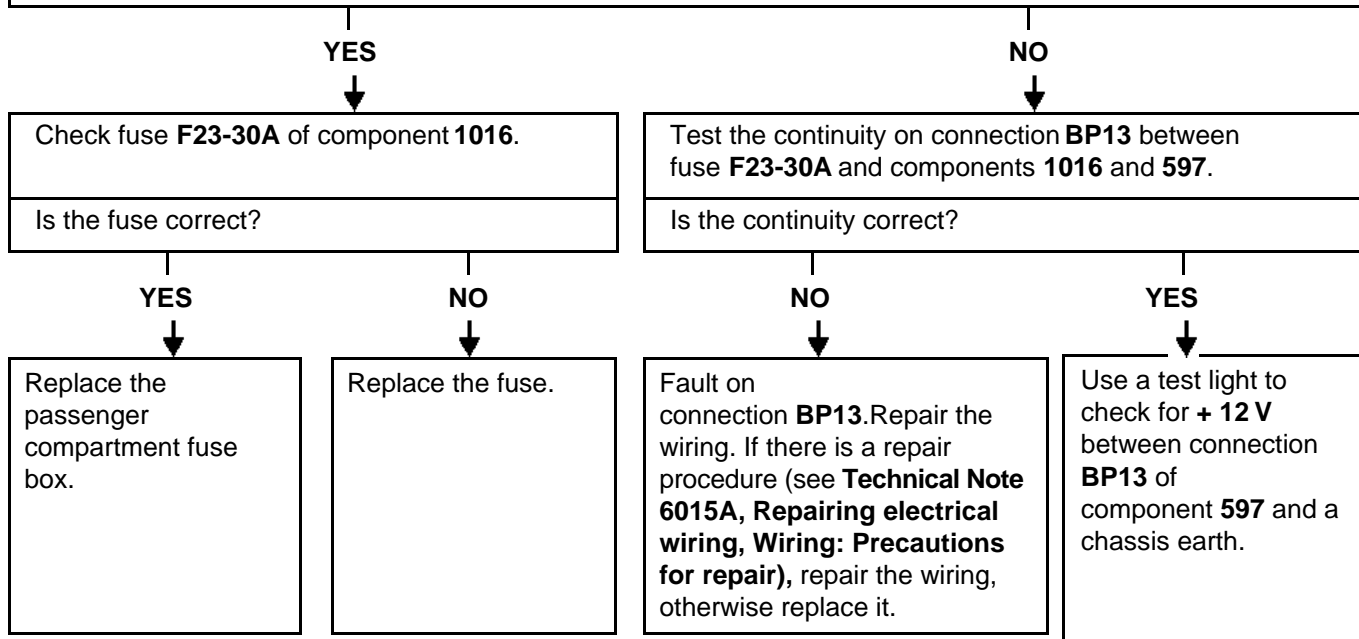
81C

ALP 15	No component 1016 fuse F23-30A supply
---------------	--

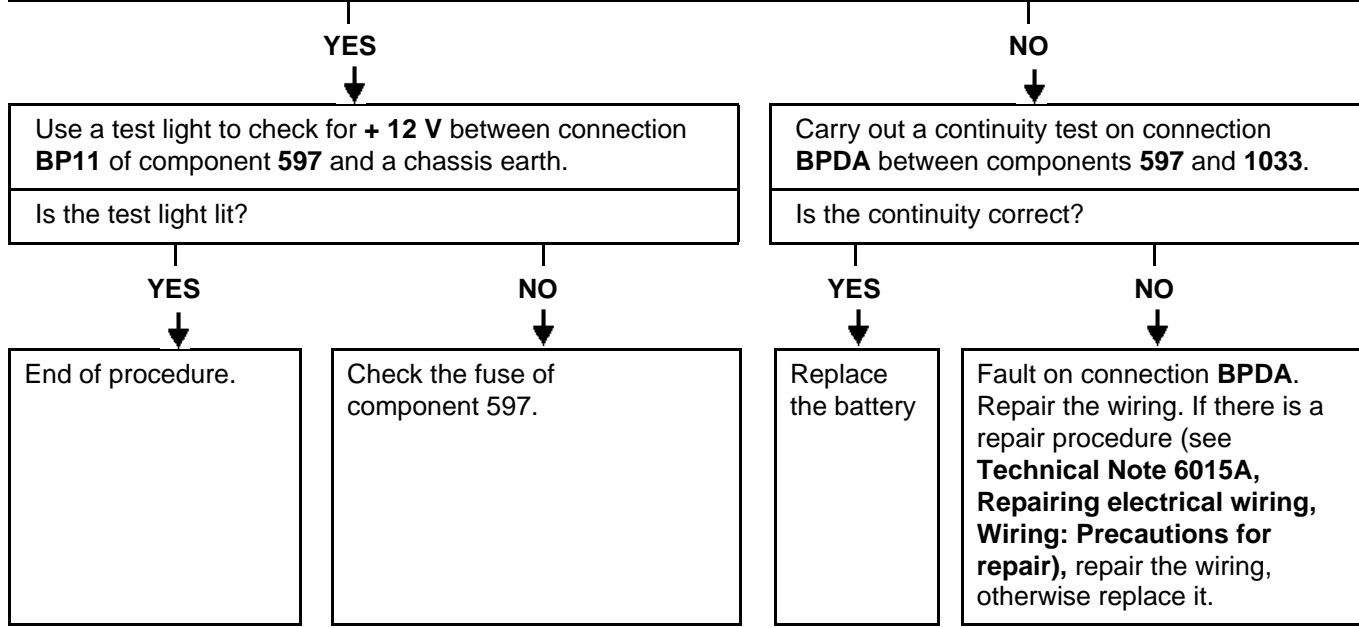
NOTES	Check fuse F23-30A of component 1016 in addition to fuse MF-60A of component 597 .
--------------	--

Use a test light to check for **+ 12 V** between fuse **F23-30A** of component **1016** and a chassis earth.

Is the test light lit?



Is the test light lit?



FUSE BOX

Fault finding chart

81C

ALP 16	No component 1016 fuse F24-30A supply
---------------	--

NOTES	Check fuse F24-30A of component 1016 in addition to fuse MF-60A of component 597 .
--------------	--

Use a test light to check for + 12 V between fuse F24-30A of component 1016 and a chassis earth.
Is the test light lit?

YES

NO

Check fuse F24-30A of component 1016 .
Is the fuse correct?

Test the continuity on connection BP13 between fuse F24-30A of components 1016 and 597 .
Is the continuity correct?

YES

NO

NO

YES

Replace the passenger compartment fuse box.

Replace the fuse.

Fault on connection BP13 . Repair the wiring. If there is a repair procedure (see Technical Note 6015A, Repairing electrical wiring, Wiring: Precautions for repair), repair the wiring, otherwise replace it.

Use a test light to check for + 12 V between connection BP13 of component 597 and a chassis earth.

Is the test light lit?

YES

NO

Use a test light to check for + 12 V between connection BP11 of component 597 and a chassis earth.
Is the test light lit?

Carry out a continuity test on connection BPDA between components 597 and 1033 .
Is the continuity correct?

YES

NO

YES

NO

End of procedure.

Check the fuse of component 597 .
--

Replace the battery

Fault on connection BPDA . Repair the wiring. If there is a repair procedure (see Technical Note 6015A, Repairing electrical wiring, Wiring: Precautions for repair), repair the wiring, otherwise replace it.

FUSE BOX

Fault finding chart

81C

ALP 17	No component 1016 fuse F26-20A supply
---------------	--

NOTES	Check fuse F26-20A of component 1016 in addition to fuse MF-60A of component 597 .
--------------	--

Use a test light to check for **+ 12 V** between fuse **F26-20A** of component **1016** and a chassis earth.

Is the test light lit?

YES

NO

Check fuse **F26-20A** of component **1016**.

Is the fuse correct?

Test the continuity on connection **BP13** between fuse **F26-20A** of components **1016** and **597**.

Is the continuity correct?

YES

NO

NO

YES

Replace the passenger compartment fuse box.

Replace the fuse.

Fault on connection **BP13**. Repair the wiring. If there is a repair procedure (see **Technical Note 6015A, Repairing electrical wiring, Wiring: Precautions for repair**), repair the wiring, otherwise replace it.

Use a test light to check for **+ 12 V** between connection **BP13** of component **597** and a chassis earth.

Is the test light lit?

YES

NO

Use a test light to check for **+ 12 V** between connection **BP11** of component **597** and a chassis earth.

Is the test light lit?

Carry out a continuity test on connection **BPDA** between components **597** and **1033**.

Is the continuity correct?

YES

NO

YES

NO

End of procedure.

Check the fuse of component **597**.

Replace the battery

Fault on connection **BPDA**. Repair the wiring. If there is a repair procedure (see **Technical Note 6015A, Repairing electrical wiring, Wiring: Precautions for repair**), repair the wiring, otherwise replace it.

FUSE BOX

Fault finding chart

81C

ALP 18	No component 1016 fuse F41-20A supply
---------------	--

NOTES	Check fuse F41-20A of component 1016 in addition to fuse MF-60A of component 597 .
--------------	--

Use a test light to check for **+ 12 V** between fuse **F41-20A** of component **1016** and a chassis earth.

Is the test light lit?

YES

NO

↓

Check fuse **F41-20A** of component **1016**.

Is the fuse correct?

↓

Test the continuity on connection **BP13** between fuse **F26-20A** of components **1016** and **597**.

Is the continuity correct?

YES

NO

NO

YES

↓

Replace the passenger compartment fuse box.

↓

Replace the fuse.

↓

Fault on connection **BP13**. Repair the wiring. If there is a repair procedure (see **Technical Note 6015A, Repairing electrical wiring, Wiring: Precautions for repair**), repair the wiring, otherwise replace it.

↓

Use a test light to check for **+ 12 V** between connection **BP13** of component **597** and a chassis earth.

Is the test light lit?

YES

NO

↓

Use a test light to check for **+ 12 V** between connection **BP11** of component **597** and a chassis earth.

Is the test light lit?

↓

Carry out a continuity test on connection **BPDA** between components **597** and **1033**.

Is the continuity correct?

YES

NO

YES

NO

↓

End of procedure.

↓

Check the fuse of component **597**.

↓

Replace the battery

↓

Fault on connection **BPDA**. Repair the wiring. If there is a repair procedure (see **Technical Note 6015A, Repairing electrical wiring, Wiring: Precautions for repair**), repair the wiring, otherwise replace it.

FUSE BOX

Fault finding chart

81C

ALP 19	No + accessories feed on component 1016
---------------	--

NOTES	<p>Check fuses F27-5A, F28-30A, F29-15A, F30-10A, F31-10A of component 1016 in addition to fuse MF-60A of component 597.</p> <p>The + accessories feed must be activated during the various tests.</p>
--------------	--

Use a test light to check for + 12 V between fuse **F27-5A** of component **1016** and a chassis earth.

Is the test light lit?

YES

NO

Check fuses **F27-5A, F28-30A, F29-15A, F30-10A, F31-10A** of component **1016**.

Are the fuses sound?

Carry out a continuity test on connection **S** between fuses **F27-5A, F28-30A, F29-15A, F30-10A, F31-10A** of component **1016**.

Is the continuity correct?

YES

NO

NO

YES

Replace the passenger compartment fuse box.

Replace the faulty fuses.

Fault on connection **BPDA**. Repair the wiring. If there is a repair procedure (see **Technical Note 6015A, Repairing electrical wiring, Wiring: Precautions for repair**), repair the wiring, otherwise replace it.

Carry out a continuity test on connection **S** between fuses **F27-5A, F28-30A, F29-15A, F30-10A, F31-10A** of components **1016** and **104**.

Is the continuity correct?

YES

NO

Carry out a continuity test between connection **S** and connection **BP12** of component **104**.

Fault on connection **S**. Repair the wiring. If there is a repair procedure (see **Technical Note 6015A, Repairing electrical wiring, Wiring: Precautions for repair**), repair the wiring, otherwise replace it.

Is the continuity correct?

YES

NO



Replace the immobiliser.

FUSE BOX

Fault finding chart

81C

ALP 19 CONTINUED	
-----------------------------	--

(A)

YES



Test the continuity on connection BP12 between component 104 and fuse Max-60a of component 597.

Is the continuity correct?

YES



Use a test light to check for + 12 V between connection BP12 of component 597 and a chassis earth.

Is the test light lit?

YES



Carry out a continuity test on connection BPDA between components 597 and 1033.

Is the continuity correct?

YES



Replace the battery

NO



Fault on connection BPDA. Repair the wiring. If there is a repair procedure (see **Technical Note 6015A, Repairing electrical wiring, Wiring: Precautions for repair**), repair the wiring, otherwise replace it.

NO



Fault on connection BP12. Repair the wiring. If there is a repair procedure (see **Technical Note 6015A, Repairing electrical wiring, Wiring: Precautions for repair**), repair the wiring, otherwise replace it.

NO



Check the condition of fuse Max-60A of component 597.

Is the fuse correct?

YES



Replace the engine fuse box.

NO



Replace the fuse of component 597.

FUSE BOX

Fault finding chart

81C

ALP 20	No component 1016 fuse F32-10A supply
---------------	--

NOTES	Check fuse F32-10A of component 1016 .
--------------	--

Use a test light to check for **+ 12 V** between fuse **F32-10A** of component **1016** and a chassis earth.

Is the test light lit?

YES

NO

Check the condition of fuse **F32-10A** of component **1016**.

Is the fuse correct?

Test the continuity on connection **R** between fuse **F32-10A** of components **1016** and **209**.

Is the continuity correct?

YES

NO

NO

YES

Replace the passenger compartment fuse box.

Replace fuse **F32-10A** of component **1016**.

Fault on connection **R**. Repair the wiring. If there is a repair procedure (see **Technical Note 6015A, Repairing electrical wiring, Wiring: Precautions for repair**), repair the wiring, otherwise replace it.

See **80B**, Exterior lighting, ALP1.

FUSE BOX

Fault finding chart

81C

ALP 21	No component 1016 fuse F33-10A supply
---------------	--

NOTES	Check fuse F33-10A of component 1016 .
--------------	--

Use a test light to check for + 12 V between fuse **F33-10A** of component **1016** and a chassis earth.

Is the test light lit?

YES



NO



Check the condition of fuse **F33-10A** of component **1016**.

Is the fuse correct?

YES



NO



Test the continuity on connection **R** between fuse **F33-10A** and components **1016** and **289**.

Is the continuity correct?

NO



YES



Replace the passenger compartment fuse box.

Replace fuse **F33-10A** of component **1016**.

Fault on connection **R**. Repair the wiring. If there is a repair procedure (see **Technical Note 6015A, Repairing electrical wiring, Wiring: Precautions for repair**), repair the wiring, otherwise replace it.

See **80B**, Exterior lighting, ALP51.

FUSE BOX

Fault finding chart

81C

ALP 22	No component 1016 fuse F34-15A supply
---------------	--

NOTES	Check fuse F34-15A of component 1016 .
--------------	--

Use a test light to check for + 12 V between fuse **F34-15A** of component **1016** and a chassis earth.

Is the test light lit?

YES

NO

Check the condition of fuse **F34-15A** of component **1016**.

Is the fuse correct?

Test the continuity on connection **CSO** between fuse **F34-15A** of components **1016** and **209**.

Is the continuity correct?

YES

NO

NO

YES

Replace the passenger compartment fuse box.

Replace fuse **F34-15A** of component **1016**.

Fault on connection **CSO**. Repair the wiring. If there is a repair procedure (see **Technical Note 6015A, Repairing electrical wiring, Wiring: Precautions for repair**), repair the wiring, otherwise replace it.

See **80B**, Exterior lighting, ALP2.

FUSE BOX

Fault finding chart

81C

Fault Finding Chart 23	No component 1016 fuse F35-15A supply
-------------------------------	--

NOTES	Check fuse F35-15A of component 1016 .
--------------	--

Use a test light to check for + 12 V between fuse **F35-15A** of component **1016** and a chassis earth.

Is the test light lit?

YES

NO

Check the condition of fuse F35-15A of component 1016 .
Is the fuse correct?

Test the continuity on connection CSO between fuse F35-15A of components 1016 and 281 .
Is the continuity correct?

YES

NO

NO

YES

Replace the passenger compartment fuse box.

Replace fuse **F35-15A** of component **1016**.

Fault on connection **CSO**. Repair the wiring. If there is a repair procedure (see **Technical Note 6015A, Repairing electrical wiring, Wiring: Precautions for repair**), repair the wiring, otherwise replace it.

See **80B**, Exterior lighting, ALP44.

FUSE BOX

Fault finding chart

81C

ALP 24	No component 1016 fuse F36-15A supply
---------------	--

NOTES	Check fuse F36-15A of component 1016 .
--------------	--

Use a test light to check for **+ 12 V** between fuse **F36-15A** of component **1016** and a chassis earth.

Is the test light lit?

YES



NO



Check the condition of fuse F36-15A of component 1016 .
Is the fuse correct?

YES



Replace the passenger compartment fuse box.

NO



Replace fuse **F36-15A** of component **1016**.

Test the continuity on connection 36G between fuse F36-15A and components 1016 and 645 .
Is the continuity correct?

NO



Fault on connection **CSO**. Repair the wiring. If there is a repair procedure (see **Technical Note 6015A, Repairing electrical wiring, Wiring: Precautions for repair**), repair the wiring, otherwise replace it.

YES



See **87B**, Passenger compartment connection unit.

FUSE BOX

Fault finding chart

81C

ALP 25	No component 1016 fuse F37-5A supply
---------------	---

NOTES	Check fuse F37-5A of component 1016 .
--------------	---

Use a test light to check for **+ 12 V** between fuse **F37-5A** of component **1016** and a chassis earth.

Is the test light lit?

YES

NO

Check the condition of fuse **F37-5A** of component **1016**.

Is the fuse correct?

Test the continuity of connection **15LP** between fuse **F37-5A** of components **1016** and **645**.

Is the continuity correct?

YES

NO

NO

YES

Replace the passenger compartment fuse box.

Replace fuse **F37-5A** of component **1016**.

Fault on connection **15LP**. Repair the wiring. If there is a repair procedure (see **Technical Note 6015A, Repairing electrical wiring, Wiring: Precautions for repair**), repair the wiring, otherwise replace it.

See **87B**, Passenger compartment connection unit.

FUSE BOX

Fault finding chart

81C

ALP 26	No component 1016 fuse F38-10A supply
---------------	--

NOTES	Check fuse F38-10A of component 1016 .
--------------	--

Use a test light to check for **+ 12 V** between fuse **F38-10A** of component **1016** and a chassis earth.

Is the test light lit?

YES

NO

Check the condition of fuse **F38-10A** of component **1016**.

Is the fuse correct?

Test the continuity on connection **67C** between fuse **F38-10A** of components **1016** and **209**.

Is the continuity correct?

YES

NO

NO

YES

Replace the passenger compartment fuse box.

Replace fuse **F38-10A** of component **1016**.

Fault on connection **67C**. Repair the wiring. If there is a repair procedure (see **Technical Note 6015A, Repairing electrical wiring, Wiring: Precautions for repair**), repair the wiring, otherwise replace it.

Replace the horn and lights switch.

FUSE BOX

Fault finding chart

81C

ALP 27	No component 1016 fuse F39-10A supply
---------------	--

NOTES	Check fuse F39-10A of component 1016 .
--------------	--

Use a test light to check for + 12 V between fuse **F39-10A** of component **1016** and a chassis earth.

Is the test light lit?

YES

NO

Check the condition of fuse **F39-10A** of component **1016**.

Is the fuse correct?

Test the continuity on connection **9J** between fuse **F39-10A** of components **1016** and **209**.

Is the continuity correct?

YES

NO

NO

YES

Replace the passenger compartment fuse box.

Replace fuse **F39-10A** of component **1016**.

Fault on connection **9J**. Repair the wiring. If there is a repair procedure (see **Technical Note 6015A, Repairing electrical wiring, Wiring: Precautions for repair**), repair the wiring, otherwise replace it.

Replace the horn and lights switch.

FUSE BOX

Fault finding chart

81C

ALP 28	No component 1016 fuse F42-10A supply
---------------	--

NOTES	Check fuse F42-10A of component 1016 .
--------------	--

Use a test light to check for + 12 V between fuse **F42-10A** of component **1016** and a chassis earth.

Is the test light lit?

YES

NO

Check the condition of fuse **F42-10A** of component **1016**.

Is the fuse correct?

Test the continuity on connection **L** between fuse **F42-10A** of components **1016** and **209**.

Is the continuity correct?

YES

NO

NO

YES

Replace the passenger compartment fuse box.

Replace fuse **F42-10A** of component **1016**.

Fault on connection **L**. Repair the wiring. If there is a repair procedure (see **Technical Note 6015A, Repairing electrical wiring, Wiring: Precautions for repair**), repair the wiring, otherwise replace it.

Replace the horn and lights switch.

Test the continuity on connection **L** between fuse **F42-10A** of components **1016** and **289**.

Is the continuity correct?

YES

NO

Replace the side light relay with a running light.

Fault on connection **L**. Repair the wiring. If there is a repair procedure (see **Technical Note 6015A, Repairing electrical wiring, Wiring: Precautions for repair**), repair the wiring, otherwise replace it.

FUSE BOX

Fault finding chart

81C

ALP 29	No component 1016 fuse F43-10A supply
---------------	--

NOTES	Check fuse F43-10A of component 1016 .
--------------	--

Use a test light to check for + 12 V between fuse **F43-10A** of component **1016** and a chassis earth.

Is the test light lit?

YES

NO

Check the condition of fuse **F43-10A** of component **1016**.

Is the fuse correct?

Test the continuity on connection **L** between fuse **F43-10A** of components **1016** and **209**.

Is the continuity correct?

YES

NO

NO

YES

Replace the passenger compartment fuse box.

Replace fuse **F43-10A** of component **1016**.

Fault on connection **L**. Repair the wiring. If there is a repair procedure (see **Technical Note 6015A, Repairing electrical wiring, Wiring: Precautions for repair**), repair the wiring, otherwise replace it.

Replace the horn and lights switch.

Test the continuity on connection **L** between fuse **F43-10A** of components **1016** and **289**.

Is the continuity correct?

YES

NO

Replace the side light relay with a running light.

Fault on connection **L**. Repair the wiring. If there is a repair procedure (see **Technical Note 6015A, Repairing electrical wiring, Wiring: Precautions for repair**), repair the wiring, otherwise replace it.

FUSE BOX

Fault finding chart

81C

ALP 30	No component 1016 diode D46 supply
---------------	---

NOTES	
--------------	--

Use a test light to check for + 12 V between diode **D46** of component **1016** and a chassis earth.

Is the test light lit?

YES



NO



Carry out a continuity test between the input and output of diode **D46** of component **1016**.

Is the continuity correct?

YES



End of procedure.

NO



Replace the passenger compartment fuse box.

Carry out a continuity check on connection **86H** between diode **D46** of component **1016** and component **645**.

Is the continuity correct?

YES



See **87B**, Passenger compartment connection unit.

NO



Fault on connection **86H**. Repair the wiring. If there is a repair procedure (see **Technical Note 6015A, Repairing electrical wiring, Wiring: Precautions for repair**), repair the wiring, otherwise replace it.